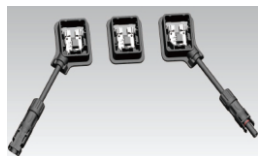


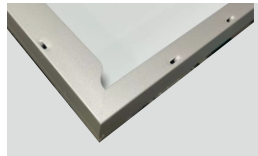


I²T Representative Office in Milan



JUNCTION BOX

- Waterproof protection grade: IP68
- Safety Level: Class II
- Maximum System Voltage: 1500V
- outstanding waterproof level
- Effectively resist harsh environments



Frame

- Strong mechanical load resistance up to 5400Pa
- Anodic oxidation layer resistant to chemical corrosion available



SMBB Technology

Better light trapping and current collection to improve module power output and reliability.



PID Resistance

Excellent Anti-PID performance guarantee via optimized mass-production process and materials control.



Higher Power Output

Module power increases 5-25% generally, bringing significantly lower LCOE and higher IRR.



Enhanced Mechanical Load

Certified to withstand: wind load (2400 Pascal) and snow load (5400 Pascal).



Hydrophobic & Hail Resistant Glass

Glass with superior strength and with nanoparticle to increase its strength and resistance.

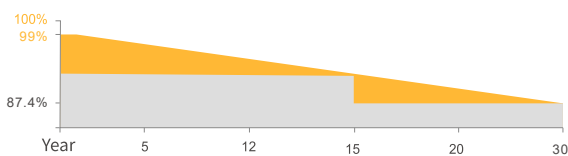
QUALIFICATIONS AND CERTIFICATES



- IEC 61215
- IEC 61730
- Periodic Factory Inspection
- Production Line Inspection
- Produced Panels Testing
- Quality Control Inspection
- Production Procedures Testing

President: Giampiero Belcredi
Contract Number PKC0012892

WARRANTY



15 YEARS Guarantee on product material and workmanship

30 YEARS Linear Power output warranty

The International Institute of Technology I²T is a research institute established in Switzerland in 2023 with branches all over the world collecting the MOST BEAUTIFUL MINDS worldwide. Before being placed on the market, each technology is validated by notified verification bodies that certify the entire production process chain in order to guarantee full safety of the investment.

Success stories of big players are the result of a dedicated work made by our institute to solve complicated problems with simple and thus reliable solutions. For us customers are not just customers, they are Partners for us.

I2T-27

ELECTRICAL DATA(STC)

Peak Power(Pmax)	440.00
Maximum Power Voltage(Vmp)	32.24
Maximum Power Current(Imp)	13.65
Open Circuit Voltage(Voc)	38.87±3%
Short Circuit Current(Isc)	14.39±3%
Module Efficiency(%)	22.54

*STC: irradiance 1000W/m², AM1.5, and cell temperature of 25°C

ELECTRICAL DATA(NMOT)

Peak Power(Pmax)	331.00
Maximum Power Voltage(Vmp)	29.91
Maximum Power Current(Imp)	11.07
Open Circuit Voltage(Voc)	36.92±3%
Short Circuit Current(Isc)	11.63±3%

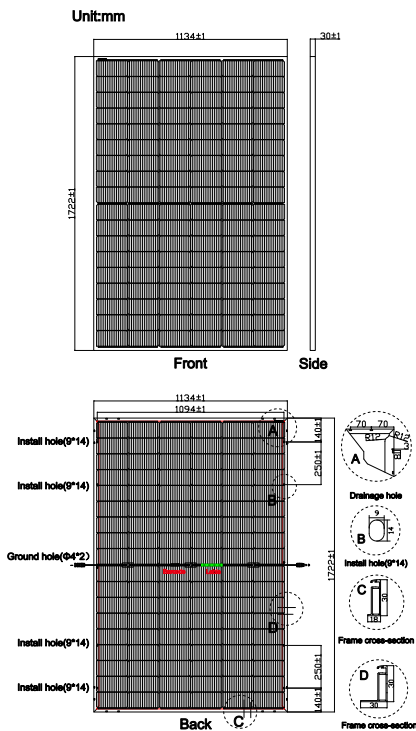
*NMOT: irradiance 800 W/m², AM 1.5, ambient temperature 20°C, wind speed 1 m/s

ELECTRICAL DATA(BNPI)

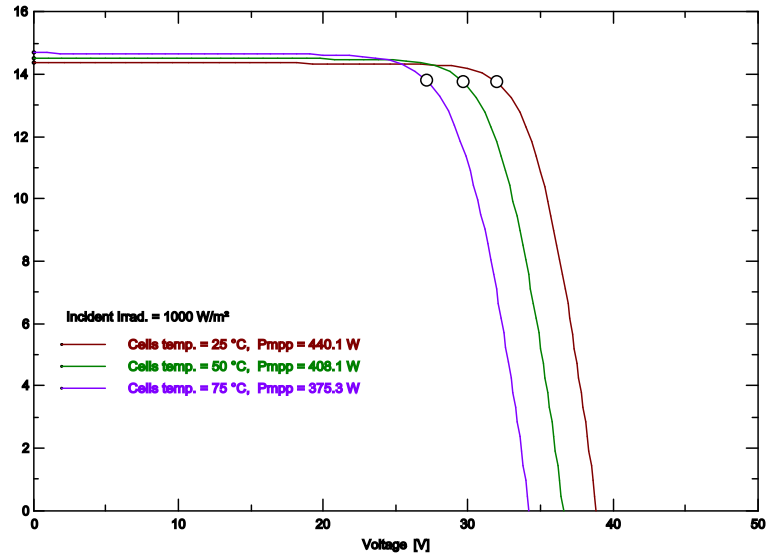
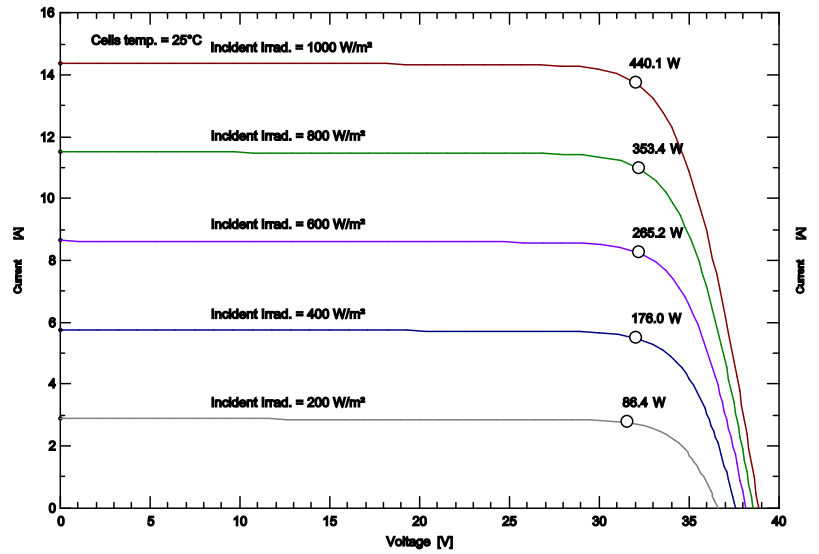
Peak Power(Pmax)	488.00
Maximum Power Voltage(Vmp)	32.24
Maximum Power Current(Imp)	15.14
Open Circuit Voltage(Voc)	38.87±3%
Short Circuit Current(Isc)	15.94±3%

*BNPI: back irradiance 135W/m², AM1.5, and cell temperature of 25°C

PV DRAWINGS



IV CURVE



TEMPERATURE & MAXIMUM RATING

Maximum System Voltage(V)	1500
Maximum Series Fuse Rating(A)	30
Power Tolerance(W)	0~+3%
Pmax Temperature Coefficients(W/°C)	-0.290%
Voc Temperature Coefficients(V/°C)	-0.250%
Isc Temperature Coefficients(A/°C)	+0.041%
NMOT Nominal Module Operating Temperature (°C)	45±2
Operating and Storage Temperature (°C)	-40~+85

MECHANICAL CHARACTERISTICS

Cell Type	182*91 N Type Bifacial Mono
No. of Cells	108 (12*9)
Dimensions	1722*1134*30mm
Weight	24.70kg
Front Glass	2.0mm AR coating tempered glass
Back Glass	2.0mm Glazed Glass
Frame	Anodized Aluminium Alloy
Junction box	IP68 3diodes
Output cables	4mm ² cable 35cm (Including MC4 connector)
MaxWind Load/Snow Load	2400Pa/5400Pa

PACKING WAY

20FT container	6 Packages/222pcs
40HQ container	26 Packages/962pcs