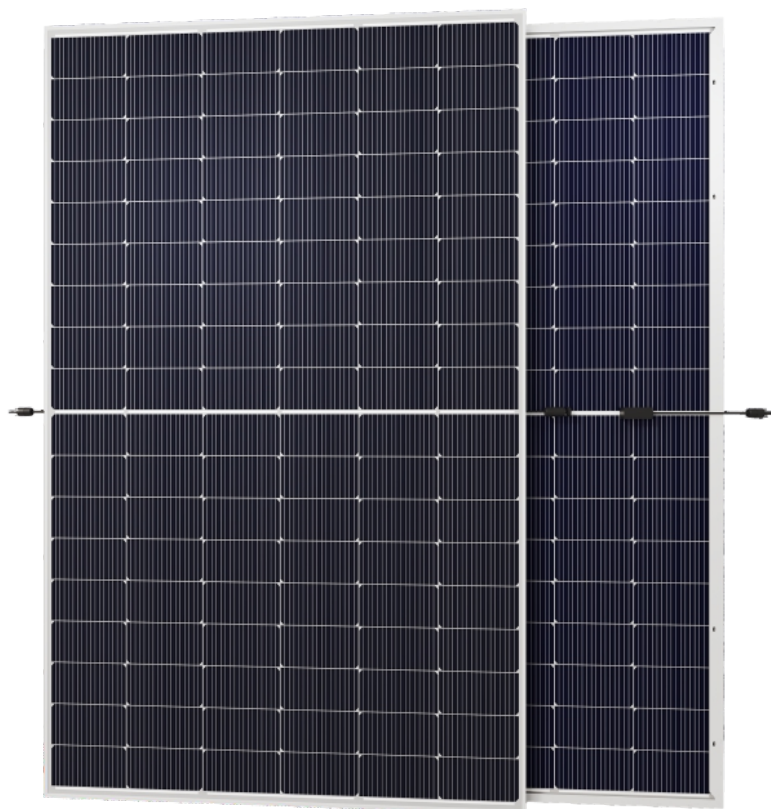




I²T

International Institute of Technology

I²T Representative Office in Milan



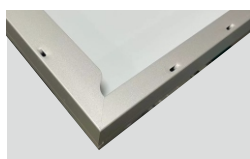
MARK1 Technology



Easy-Self Cleaning & IR Reflective Properties



Superior Waterproof



Anodized Supports



SMBB Technology

Better light trapping and current collection to improve module power output and reliability.



PID Resistance

Excellent Anti-PID performance guarantee via optimized mass-production process and materials control.



Higher Power Output

Module power increases 5-25% generally, bringing significantly lower LCOE and higher IRR.



Enhanced Mechanical Load

Certified to withstand: wind load (2400 Pascal) and snow load (5400 Pascal).



Hydrophobic & Hail Resistant Glass

Glass with superior strength and with nanoparticle to increase its strength and resistance.

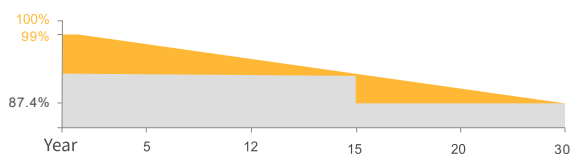
QUALIFICATIONS AND CERTIFICATES



- IEC 61215
- IEC 61730
- Periodic Factory Inspection
- Production Line Inspection
- Produced Panels Testing
- Quality Control Inspection
- Production Procedures Testing

President: Giampiero Belcredi
Contract Number PKC0012892

WARRANTY



15 YEARS

Guarantee on product material and workmanship

30 YEARS

Linear Power output warranty

The International Institute of Technology I²T is a research institute established in Switzerland in 2023 with branches all over the world collecting the MOST BEAUTIFUL MINDS worldwide. Before being placed on the market, each technology is validated by notified verification bodies that certify the entire production process chain in order to guarantee full safety of the investment.

Success stories of big players are the result of a dedicated work made by our institute to solve complicated problems with simple and thus reliable solutions. For us customers are not just customers, they are Partners for us.

I2T-33

ELECTRICAL DATA(STC)

Peak Power(Pmax)	705.00
Maximum Power Voltage(Vmp)	40.92
Maximum Power Current(Imp)	17.23
Open Circuit Voltage(Voc)	49.10±3%
Short Circuit Current(Isc)	18.00±3%
Module Efficiency(%)	22.70

*STC:irradiance 1000W/m², AM1.5, and cell temperature of 25°C

TEMPERATURE & MAXIMUM RATING

Maximum System Voltage (V)	1500
Maximum Series Fuse Rating (A)	30
Power Tolerance (W)	0~+3%
Pmax Temperature Coefficients (W/°C)	-0.290%
Voc Temperature Coefficients (V/°C)	-0.250%
Isc Temperature Coefficients (A/°C)	+0.041%
NMOT Nominal Module Operating Temperature (°C)	45±2
Operating and Storage Temperature (°C)	-40~+85

ELECTRICAL DATA(BNPI)

Peak Power(Pmax)	781.00
Maximum Power Voltage(Vmp)	40.92
Maximum Power Current(Imp)	19.09
Open Circuit Voltage(Voc)	49.10±3%
Short Circuit Current(Isc)	19.94±3%

*BNPI:back irradiance 135W/m², AM1.5, and cell temperature of 25°C

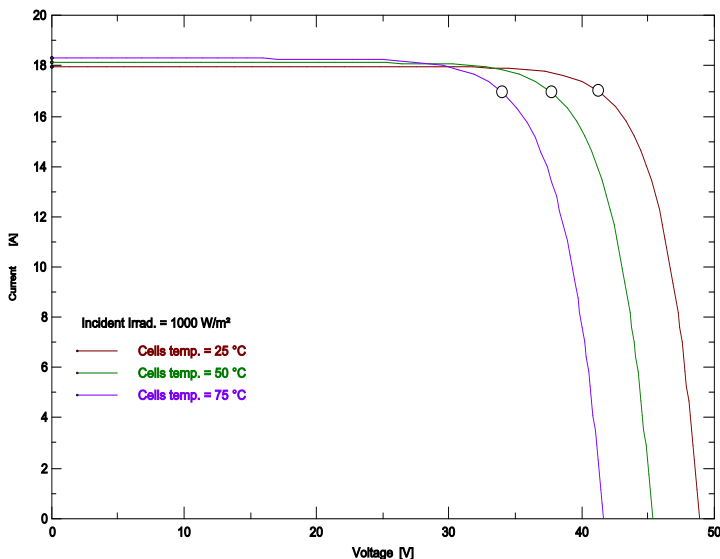
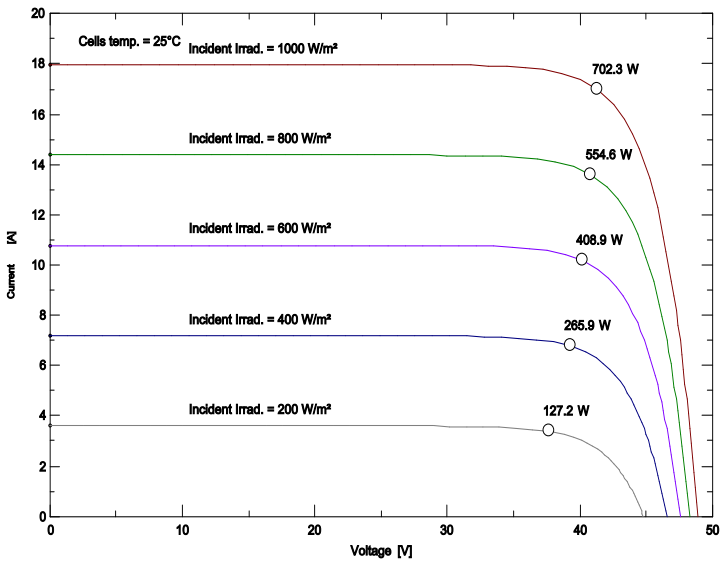
MECHANICAL CHARACTERISTICS

Cell Type	210*105 N Type Bifacial Mono
No. of Cells	132 (12*11)
Dimensions	2384*1303*30mm
Weight	38.00kg
Front Glass	2.0mm AR coating tempered glass
Back Glass	2.0mm Glazed Glass
Frame	Anodized Aluminium Alloy
Junction box	IP68 3diodes
Output cables	4mm ² cable 35cm (Including MC4 connector)
MaxWind Load/Snow Load	2400Pa/5400Pa

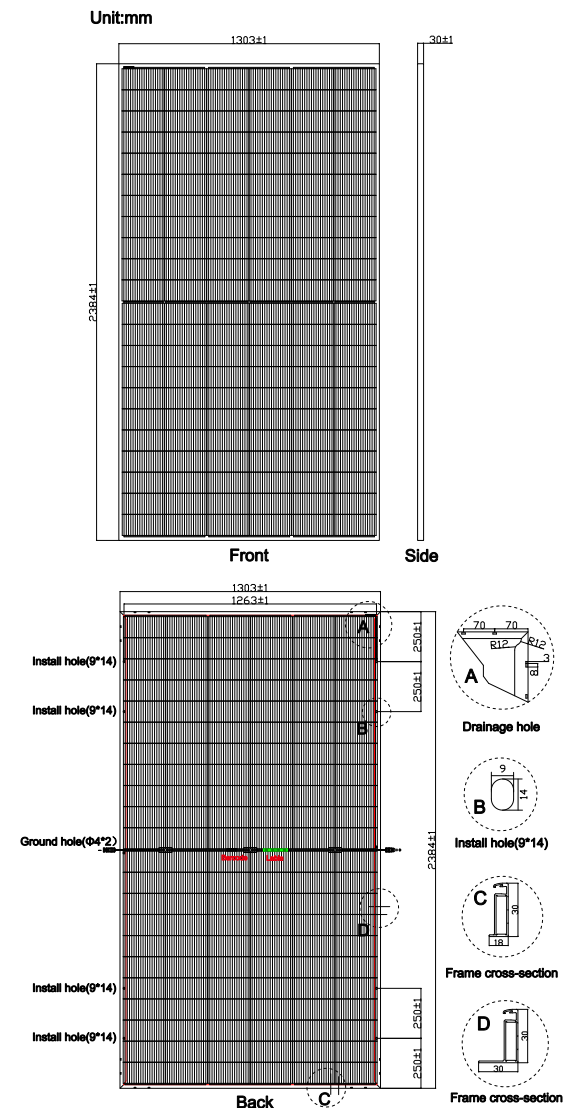
PACKING WAY

40HQ container	26 Packages/666pcs
----------------	--------------------

IV CURVE



PV DRAWINGS



CONTACT US

I2T SA – International Institute of Technology – Switzerland © 2024 - VAT NUMBER CHE111985494 - www.i2tholding.com